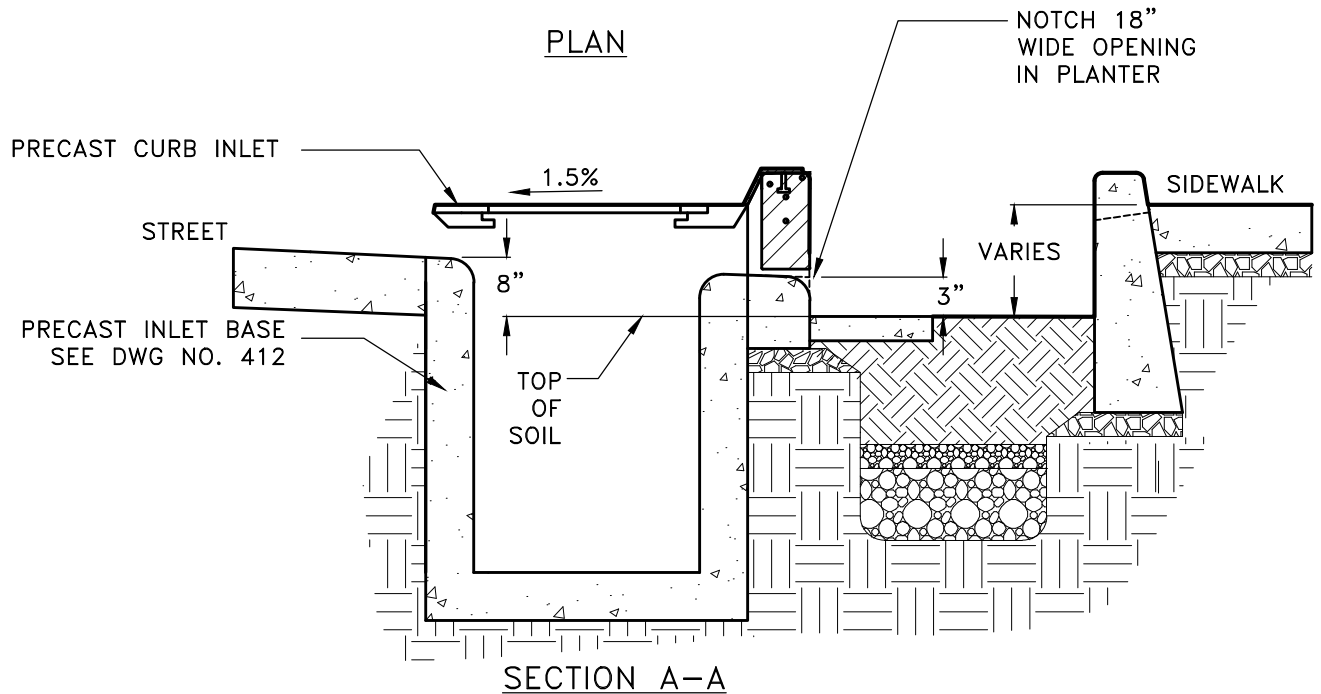


PLAN



SECTION A-A

NOTES

1. CURB INLET TOP SHALL BE CUSTOM CAST FOR CURB OPENING ON BOTH SIDES.
2. USE STANDARD STORM MANHOLE COVER FOR LID.
3. HANDRAIL MAY BE REQUIRED WHEN DEPTH OF PLANTER ADJACENT TO SIDEWALK EXCEEDS 20".

CITY OF ALBANY, OREGON
PUBLIC WORKS DEPARTMENT

CURB INLET
SEDIMENT COLLECTOR
WITH PLANTER

NO SCALE

FEBRUARY 2024

NO. 615